

# Liberty

## Color Selection Chart for Architectural Panels

RIGHT FOR SO MANY REASONS®

Liberty™ Building Systems uses high quality paint systems designed to provide long-term performance and protection. Each coating is formulated with thoroughly researched and field-proven pre-treatments, primers, resins and pigments to meet your standards and performance requirements.



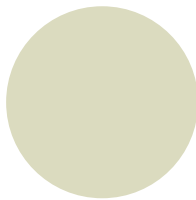
### LIBERTY COLORS

#### Kynar

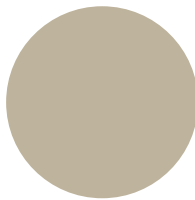
Liberty's architectural panels are finished with the Kynar paint system, which combines ceramic pigmentation with polyvinylidene fluoride for a superior, long lasting performance. Kynar (PVDF) finishes are respected for their durability and resistance to chalk, fading and chemicals.



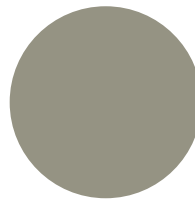
Cool Regal White



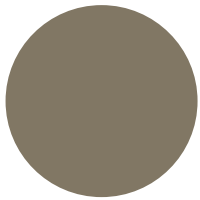
Egyptian White



Cool Sierra Tan



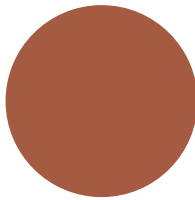
\*Cool Zinc Gray



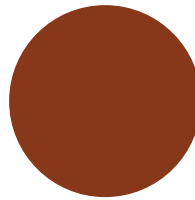
\*Cool Weathered Copper



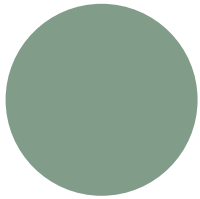
\*Cool Dark Bronze



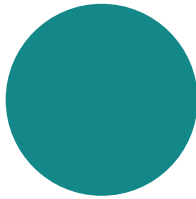
Terra Cotta



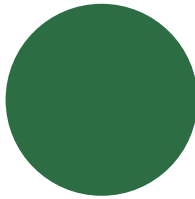
Cool Colonial Red



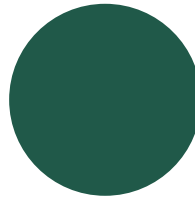
\*Hemlock



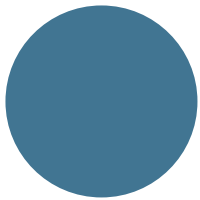
\*Jade Green



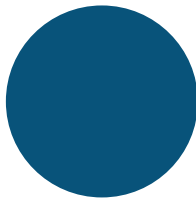
\*Leaf Green



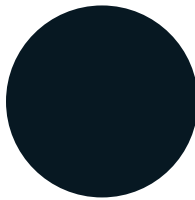
Forest Green



\*Tahoe Blue



\*Regal Blue



Matte Black

- Colors shown on this chart are available for the following Liberty™ Building Systems products:
  - HorizonLine
  - Liberty Soffit
- Some colors may be subject to lead-time restrictions
- Trim is available in all colors

\* Please inquire for up-charge on these color combinations

NOTE: All color selections are close representations, but are limited by processing and viewing conditions.

Liberty Building Systems  
877-505-4596  
Fax: 901-372-1341  
[www.LibertyBuildings.com](http://www.LibertyBuildings.com)